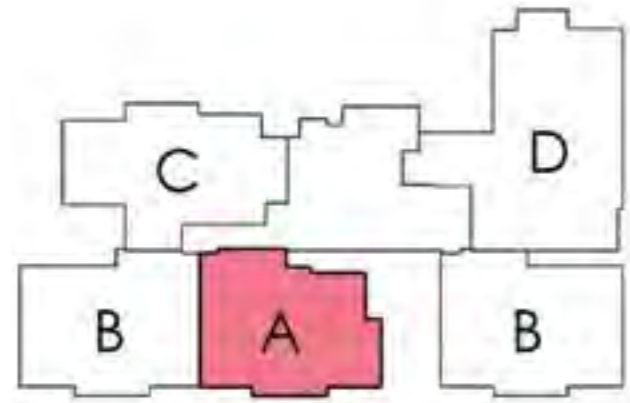




UNIT  
*Plans*

 **TYPE A**  
**3 BEDROOMS**  
**+ 2 TOILETS**



**CLUSTER PLAN**



**KEY PLAN**



**SUPER BUILT-UP AREA**

1498 Sq.ft. / 139.13 Sq.m.

**CARPET AREA**

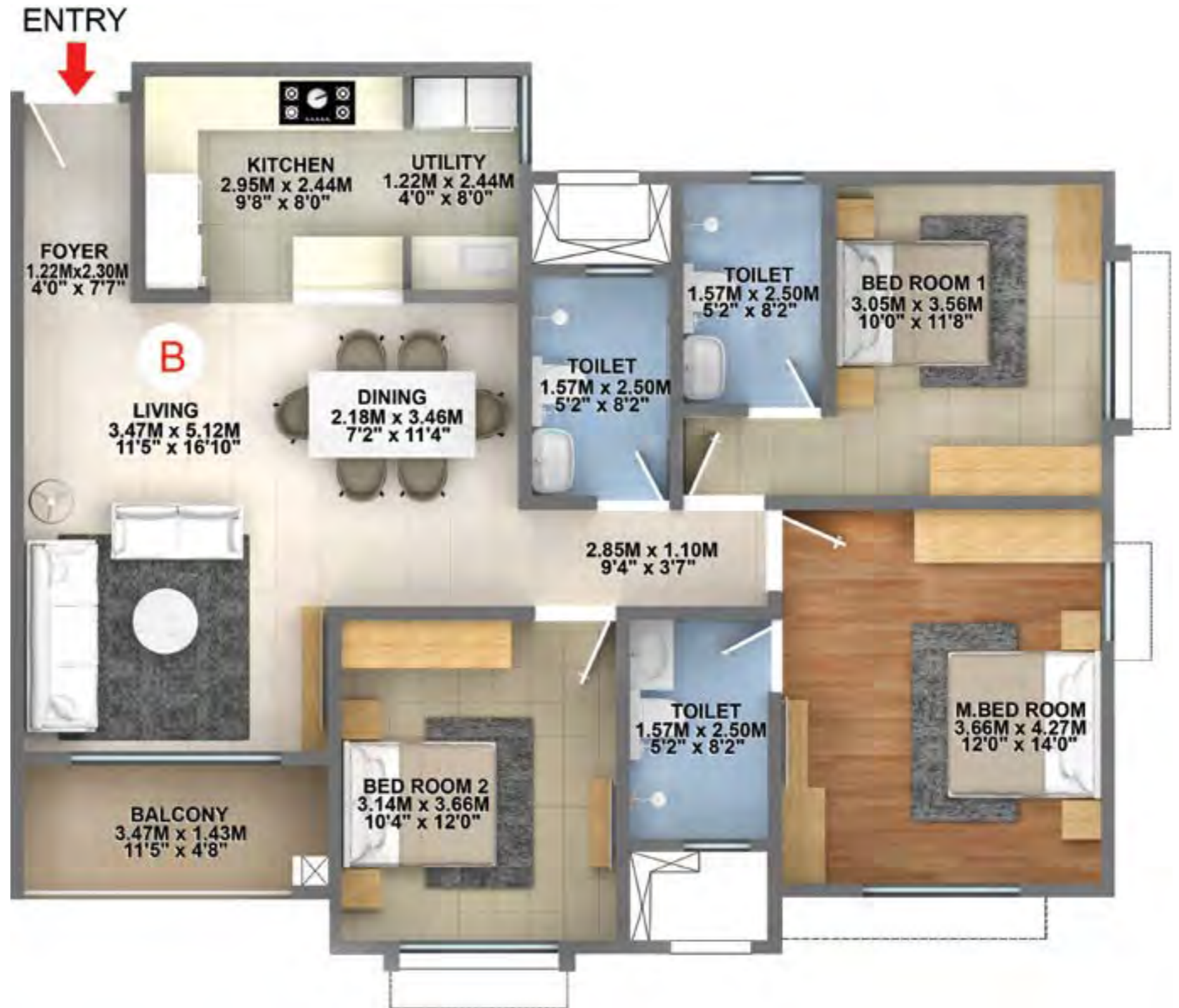
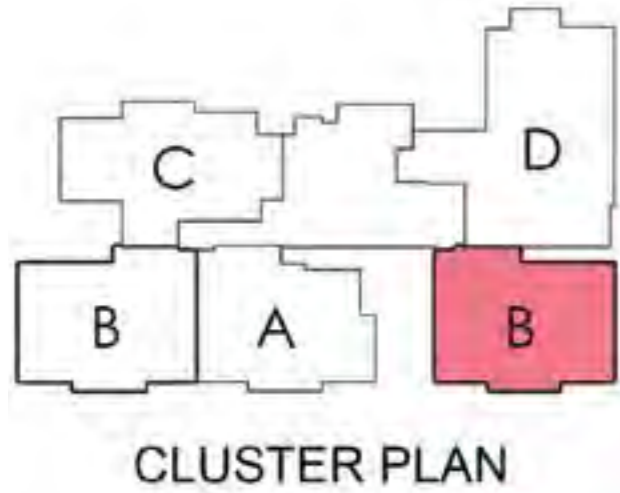
997 Sq.ft. / 92.58 Sq.m.

**BALCONY**

51 Sq.ft. / 4.77 Sq.m.

The information depicted herein viz., master plans, floor plans, furniture layout, fittings, illustrations, specifications, designs, dimensions, rendered views, colours, amenities and facilities etc., are subject to change without notifications as may be required by the relevant authorities or the Developer's architect, and cannot form part of an offer or contract. Whilst every care is taken in providing this information, the Developer cannot be held liable for variations. All illustrations and pictures are artist's impression only. The information is subject to variations, additions, deletions, substitutions and modifications as may be recommended by the company's architect and/or the relevant approving authorities. The Developer is wholly exempt from any liability on account of any claim in this regard. (1 square metre = 10.764 square feet). E & OE. All dimensions and calculations are done in metric system (M/Sq.m), and imperial system (Ft/Sq.ft) shown is for reference only. All dimensions indicated in the drawing are from unfinished surfaces, excluding plaster thickness and tile thickness.

 **TYPE B**  
  
**3 BEDROOMS**  
**+ 3 TOILETS**



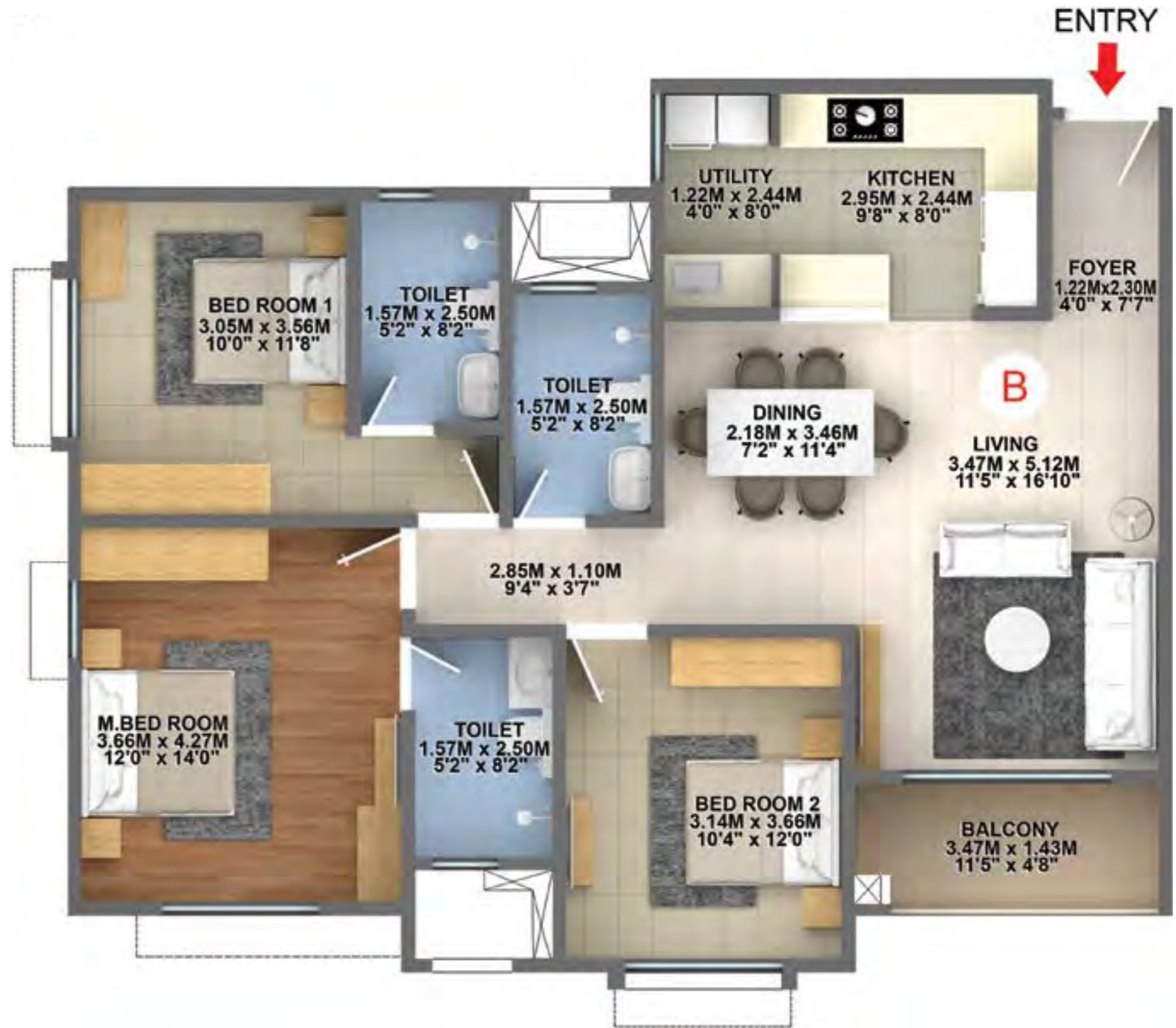
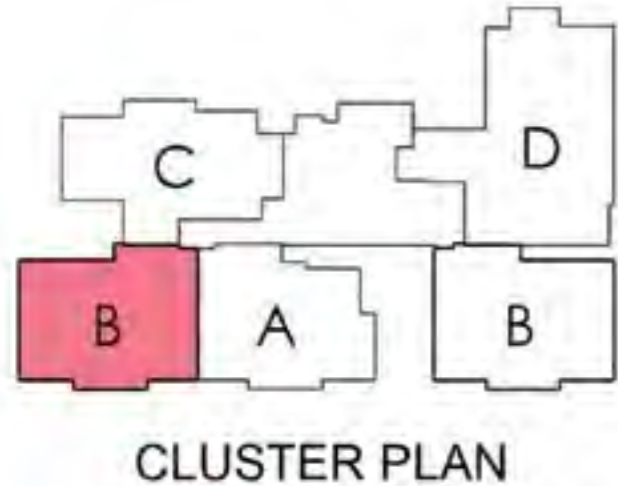
**SUPER BUILT-UP AREA**  
**1587 Sq.ft. / 147.47 Sq.m.**

**CARPET AREA**  
**1062 Sq.ft. / 98.62 Sq.m.**

**BALCONY**  
**51 Sq.ft. / 4.77 Sq.m.**

The information depicted herein viz., master plans, floor plans, furniture layout, fittings, illustrations, specifications, designs, dimensions, rendered views, colours, amenities and facilities etc., are subject to change without notifications as may be required by the relevant authorities or the Developer's architect, and cannot form part of an offer or contract. Whilst every care is taken in providing this information, the Developer cannot be held liable for variations. All illustrations and pictures are artist's impression only. The information is subject to variations, additions, deletions, substitutions and modifications as may be recommended by the company's architect and/or the relevant approving authorities. The Developer is wholly exempt from any liability on account of any claim in this regard. (1 square metre = 10.764 square feet). E & OE. All dimensions and calculations are done in metric system (M/Sq.m), and imperial system (Ft/Sq.ft) shown is for reference only. All dimensions indicated in the drawing are from unfinished surfaces, excluding plaster thickness and tile thickness.

 **TYPE B**  
**3 BEDROOMS**  
**+ 3 TOILETS**



**SUPER BUILT-UP AREA**

**1587 Sq.ft. / 147.47 Sq.m.**

**CARPET AREA**

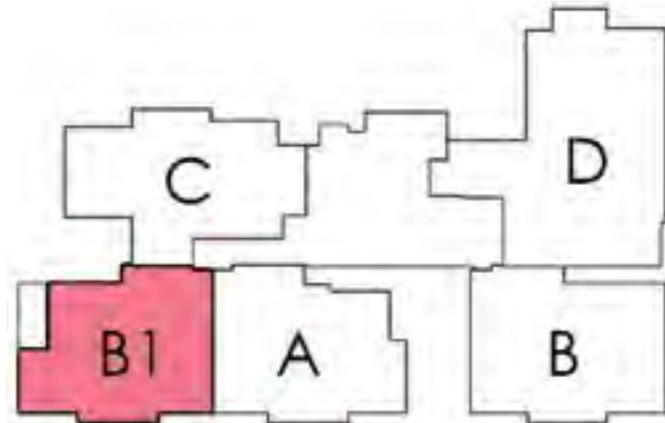
**1062 Sq.ft. / 98.62 Sq.m.**

**BALCONY**

**51 Sq.ft. / 4.77 Sq.m.**

The information depicted herein viz., master plans, floor plans, furniture layout, fittings, illustrations, specifications, designs, dimensions, rendered views, colours, amenities and facilities etc., are subject to change without notifications as may be required by the relevant authorities or the Developer's architect, and cannot form part of an offer or contract. Whilst every care is taken in providing this information, the Developer cannot be held liable for variations. All illustrations and pictures are artist's impression only. The information is subject to variations, additions, deletions, substitutions and modifications as may be recommended by the company's architect and/or the relevant approving authorities. The Developer is wholly exempt from any liability on account of any claim in this regard. (1 square metre = 10.764 square feet). E & OE. All dimensions and calculations are done in metric system (M/Sq.m), and imperial system (Ft/Sq.ft) shown is for reference only. All dimensions indicated in the drawing are from unfinished surfaces, excluding plaster thickness and tile thickness.

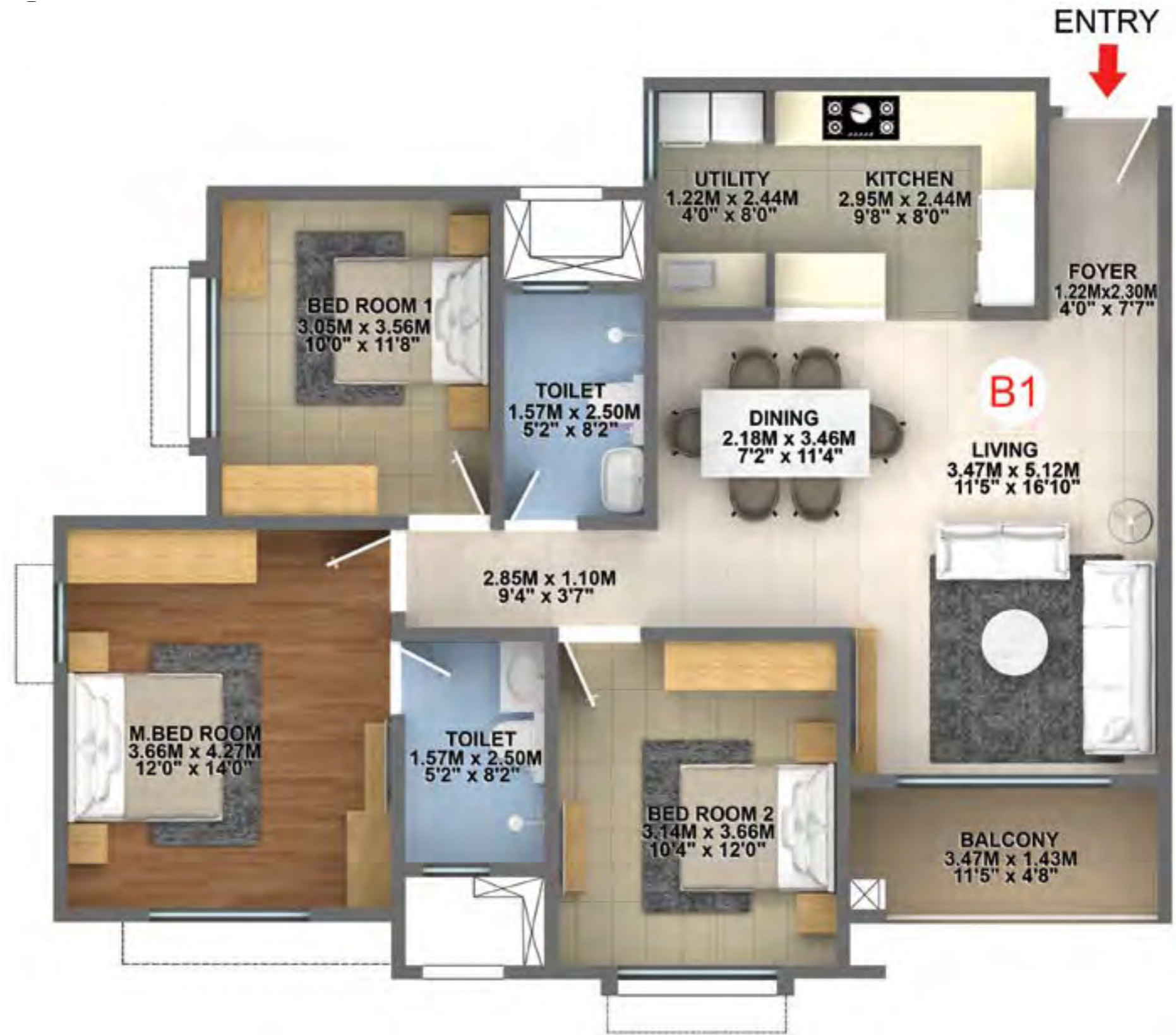
 **TYPE B1**  
**3 BEDROOMS**  
**+ 2 TOILETS**



**CLUSTER PLAN**



**KEY PLAN**



**SUPER BUILT-UP AREA**

**1495 Sq.ft. / 138.88 Sq.m.**

**CARPET AREA**

**992 Sq.ft. / 92.18 Sq.m.**

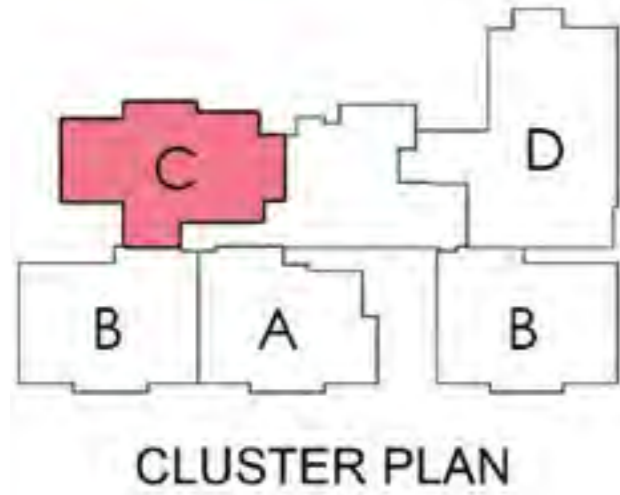
**BALCONY**

**51 Sq.ft. / 4.77 Sq.m.**

The information depicted herein viz., master plans, floor plans, furniture layout, fittings, illustrations, specifications, designs, dimensions, rendered views, colours, amenities and facilities etc., are subject to change without notifications as may be required by the relevant authorities or the Developer's architect, and cannot form part of an offer or contract. Whilst every care is taken in providing this information, the Developer cannot be held liable for variations. All illustrations and pictures are artist's impression only. The information is subject to variations, additions, deletions, substitutions and modifications as may be recommended by the company's architect and/or the relevant approving authorities. The Developer is wholly exempt from any liability on account of any claim in this regard. (1 square metre = 10.764 square feet). E & OE. All dimensions and calculations are done in metric system (M/Sq.m), and imperial system (Ft/Sq.ft) shown is for reference only. All dimensions indicated in the drawing are from unfinished surfaces, excluding plaster thickness and tile thickness.



**TYPE C**  
**3 BEDROOMS**  
**+ 3 TOILETS**



**SUPER BUILT-UP AREA**

1581 Sq.ft. / 146.87 Sq.m.

**CARPET AREA**

1049 Sq.ft. / 97.49 Sq.m.

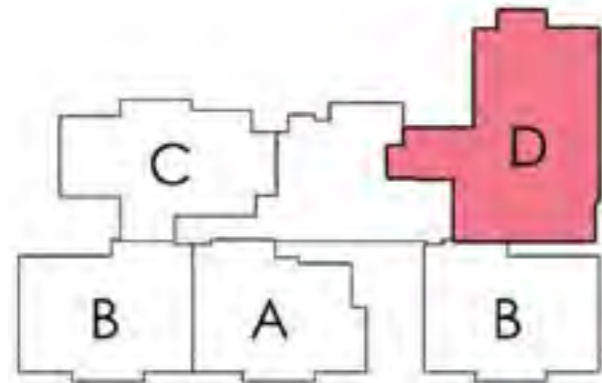
**BALCONY**

52 Sq.ft. / 4.80 Sq.m.

The information depicted herein viz., master plans, floor plans, furniture layout, fittings, illustrations, specifications, designs, dimensions, rendered views, colours, amenities and facilities etc., are subject to change without notifications as may be required by the relevant authorities or the Developer's architect, and cannot form part of an offer or contract. Whilst every care is taken in providing this information, the Developer cannot be held liable for variations. All illustrations and pictures are artist's impression only. The information is subject to variations, additions, deletions, substitutions and modifications as may be recommended by the company's architect and/or the relevant approving authorities. The Developer is wholly exempt from any liability on account of any claim in this regard. (1 square metre = 10.764 square feet). E & OE. All dimensions and calculations are done in metric system (M/Sq.m), and imperial system (Ft/Sq.ft) shown is for reference only. All dimensions indicated in the drawing are from unfinished surfaces, excluding plaster thickness and tile thickness.



**TYPE D**  
**4 BEDROOMS**  
**+ 4 TOILETS**  
**+ MAID'S ROOM**



CLUSTER PLAN



KEY PLAN



**SUPER BUILT-UP AREA**

2356 Sq.ft. / 218.87 Sq.m.

**CARPET AREA**

1548 Sq.ft. / 143.80 Sq.m.

**BALCONY**

103 Sq.ft. / 9.55 Sq.m.

The information depicted herein viz., master plans, floor plans, furniture layout, fittings, illustrations, specifications, designs, dimensions, rendered views, colours, amenities and facilities etc., are subject to change without notifications as may be required by the relevant authorities or the Developer's architect, and cannot form part of an offer or contract. Whilst every care is taken in providing this information, the Developer cannot be held liable for variations. All illustrations and pictures are artist's impression only. The information is subject to variations, additions, deletions, substitutions and modifications as may be recommended by the company's architect and/or the relevant approving authorities. The Developer is wholly exempt from any liability on account of any claim in this regard. (1 square metre = 10.764 square feet). E & OE. All dimensions and calculations are done in metric system (M/Sq.m), and imperial system (Ft/Sq.ft) shown is for reference only. All dimensions indicated in the drawing are from unfinished surfaces, excluding plaster thickness and tile thickness.